



ROTTET COLLECTION



NEW CANAAN LOUNGE CHAIR

no. CH-013

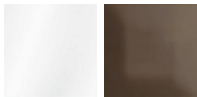
DIMENSIONS

W 26.5" x D 31.75" x H 29" x SH 16.5"

W 67cm x D 81cm x H 74cm x SH 42cm

FINISHES

Frame: Clear & Bronze Acrylic



Metal: Stainless Steel & Polished Graphite



Upholstery: All Rottet Collection Upholsteries

