

# ARGO

MAURO LIPPARINI



Perfect for a unique living room based around balance and bespoke aesthetics, the C-shaped **Argo** sofa fills the space with its fully customisable set-up thanks to a succession of storage/pedestal elements. An unbeatable mix of good design and the best materials.

## TYPE / SOFAS

## TECHNICAL DESCRIPTION

*Argo is a sofa system, which is available in fixed and modular versions. It is characterised by the multiple possibilities of its compositions. It has a plywood frame and includes central units without an armrest, a corner and terminal element with two different types of armrests, pouf and chaise-longue. All these units are available in two different widths and are totally integrable to each other. The project also includes coffee tables and bookcases, which can be stacked on the side or the back of the sofas.*

**Cushions:** removable available in 970mm (38 2/8") and 1170mm (46 1/8") widths. The polyurethane foam seat cushion has different densities and covered with polyester fibre. The back cushion is made of polyester fibre and

*sterilized feathers and upholstered with cotton lining.*

**Bookcase elements:** *are independent from the sofas and can be placed without any restrictions. The bookcase units and tables are constructed from Th.38mm. wood particle panels. Available in the finishes: matt lacquered, glossy lacquered or wood.*

**Legs:** *H80mm (3 1/8") tall adjustable of the sofa and bookcases are in a gunmetal finish.*



# DESIGNER

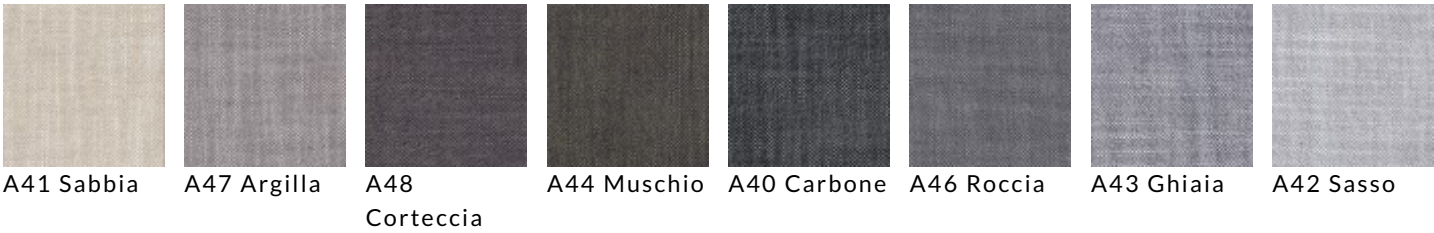
MAURO LIPPARINI

**Mauro Lipparini** earned a degree in Architecture in 1980 from Università degli Studi of Florence, where he also worked as a professor. He won the international design contests Young & Designer Milan (1987) and International Du Pont Award Köln (Germany, 1988 and 1989). Lipparini's intense activity in the field of industrial design covers office and home furniture, the textile industry and other products created for many companies in Europe and Japan. In architecture and interior design, Lipparini has concentrated mainly on private and public housing, on showrooms, retail sales outlets and exposition installations. Furthermore, Lipparini also designs and realizes advanced corporate identity image systems that range from graphics to editorial services to production. Lipparini's style is based on the essential shapes and the clear and decisive lines that are characteristic of natural minimalism. His creations are imbued with a joyful spirit and with an elating sense of aesthetic pleasure and creativity. Thanks to his free use of color, organic weave patterns and original visual ideas, Lipparini amplifies the palette of minimalism, conveying the spontaneity and power of this aesthetic style and projecting it towards a new era of great maturity and wellbeing.

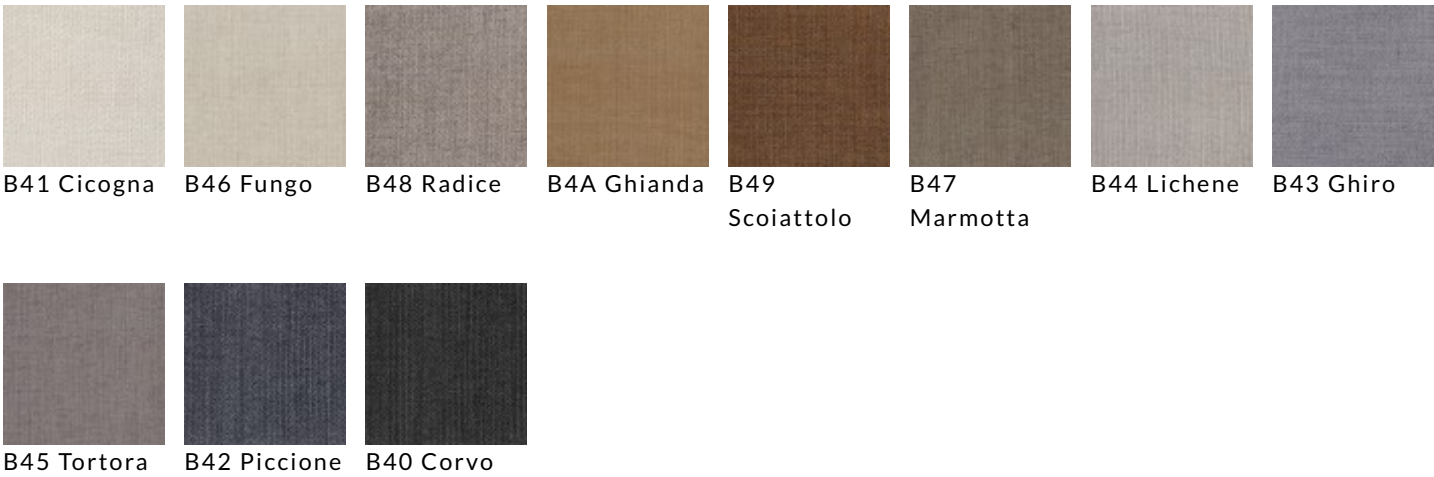


# COVER FINISHINGS

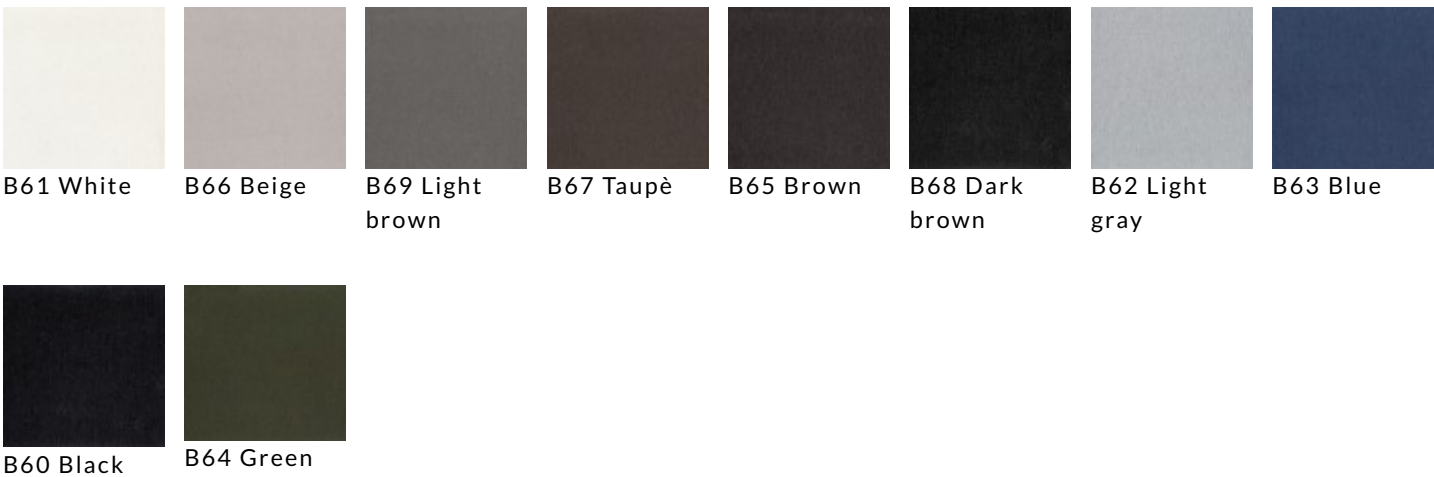
## NODONE



## JOJO



## 629



## BARBAT



B31 Cigno



B36 Tortora



B37  
Beccaccino



B34 Airone



B32 Ghiro



B33 Piccione



B35 Riccio



B30 Corvo

## LARIO



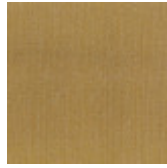
C50 Notte



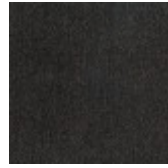
C59  
Nocciola



C56 Latte



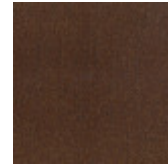
C53  
Curcuma



C51  
Cioccolato



C54 Cenere



C52  
Cannella



C58 Avena



C55  
Antracite



C56 Latte

## TULSA



C82 Orso  
polare



C83 Airone



C85 Lepre



C88 Alpaca



C86 Cervo



C81 Corvo



C87  
Alligatore



C84 Squalo  
blu

## M155



C91 Platino



C92 Argento



C90 Ferro



C93 Oro



C94 Bronzo

## FUNKY



C70 White  
mix



C71 Rock  
mix



C7A Nuts  
mix



C78 Green  
mix



C76 Mustard  
mix



C77 Orange  
mix



C72 Brown  
mix



C79 Blue  
mix



C73 Iron  
mix



C74 Grey  
mix



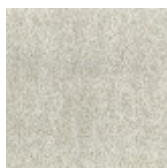
C75 Black  
mix

## ARTIDE

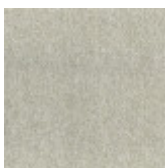


C20 Ecrù

## OSTELLATO



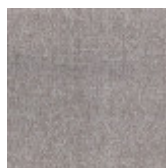
D4C Avorio



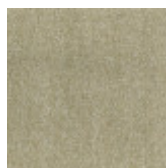
D4B Pietra  
Leccese



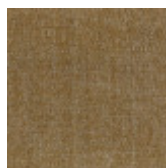
D4G Tortora



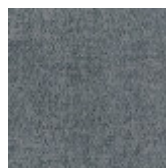
D4E Beige  
rosè



D4D Greige



D4I Senape



D4A City  
Grey



D4H Blu  
Eolie



D4F Grigio  
di Payne

## BRERA



D31 Cigno



D36 Tortora



D37 Gufo



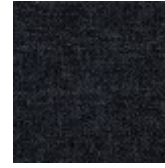
D34 Picchio  
verde



D32 Airone



D35  
Piccione



D33 Rondine



D30 Corvo

## INDIANSKOP



D1B Sabbia



D1G Creta



D1F Betulla



D1C Sasso



D1D Roccia



D1A  
Carbone



D1E Lichene



D1H Terra

## TUNDRA



D2B Cigno



D2F Tortora



D2G Fungo



D2H Cicogna



D2L Ghianda



D2J Cervo



D2E Lichene



D2C Ghiro



D2D Lupo



D2K Talpa



D2A Corvo

## FLYNN



D3B Rugiada



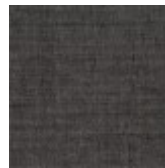
D3F Pietra



D3G Roccia



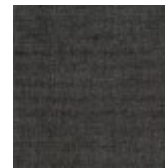
D3L Civetta



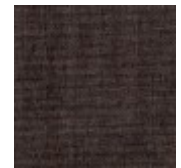
D3J Gufo



D3K Daino



D3E Muschio



D3H Guscio  
di lumaca



D3C Nebbia



D3D Pioggia



D3A Notte

## GONG



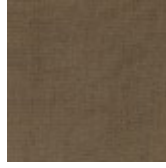
E61 Cigno



E67 Creta



E6C Lumaca



E68  
Scoiattolo



E62 Airone



E65 Tortora



E6A Blu  
fiume



E6B Talpa



E66 Riccio



E63 Passero



E69 Orso  
bruno



E60 Rondine



E64 Felce

## TADAO



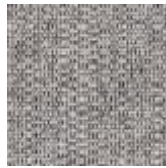
E81 White  
mix



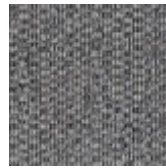
E85 Sand  
mix



E83 Zaffiro  
mix



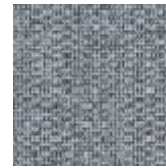
E86 Snow  
mix



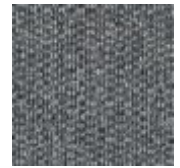
E88 Bronze  
mix



E87  
Cappuccino  
mix



E82 Stone  
mix



E80 Taipè  
mix



E89 Rust mix



E84 Green  
mix



E90 Sulfur  
mix

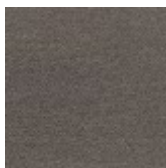
## YELLOWSTONE



E96 Rugiada



E99 Sabbia



E98 Terra



E95 Pietra



E97  
Corteccia



## GEMMA PLUS



D54 Cigno



D59 Fungo



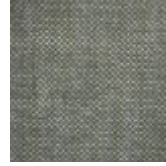
D61  
Castagna



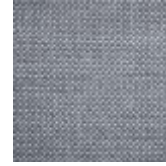
D65 Lumaca



D60  
Nocciola



D57 Sotto  
bosco



D55 Ghiro



D56 Gufo



D73 Rondine



D66 Volpe



D58 Riccio

## VELLUTO LARIO



F33 Pietra



F56 Sabbia



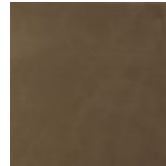
F57 Tortora



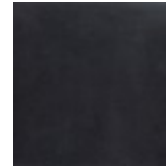
F51  
Scoiattolo



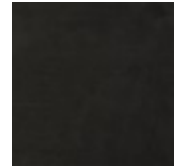
F54 Volpe



F55 Cervo

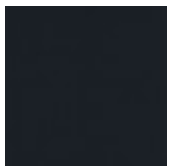


F35 Rondine

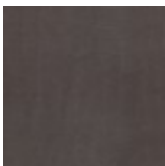


F53  
Corteccia

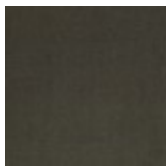
## VELLUTO REGAL



F58 Mirtillo



F5A  
Castagna



F59 Muschio

## LUXUS



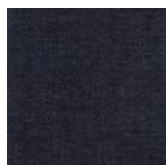
E50 Bianco



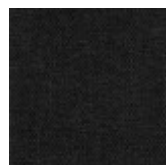
F01 Ecrù



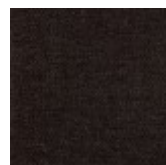
F02 Grigio  
perla



F05 Blu

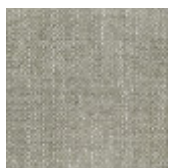


F03 Lava



F04 Testa di  
moro

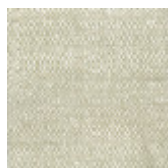
## HIRA



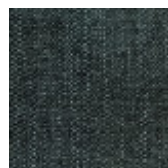
E7A Ostrica



E79 Alga



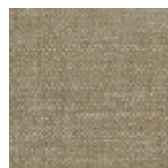
E78 Sugar



E77 Fumè



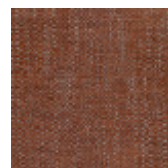
E76  
Liquirizia



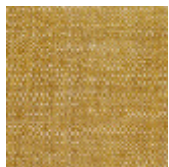
E75 Vanilla



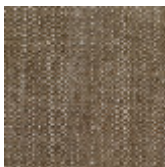
E74 Marron  
Glacé



E72 Brick



E71 Curry

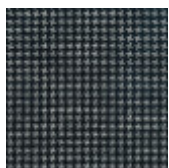


E70 E60

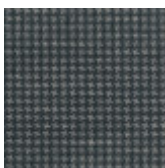


E73 Cacao

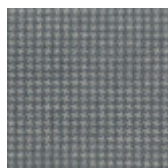
## SORISOLE



F75 Noir



F77 Pietra



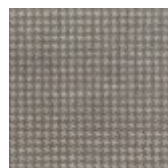
F76  
Crepuscolo



F78 Foglia



F71 Dune



F73 Creta



F72  
Terracotta



F70 Terre di  
Siena



F74 Bianco  
naturale

## GAUCHO



F28 Neve



F21 Nebbia



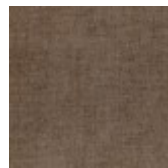
F29  
Grandine



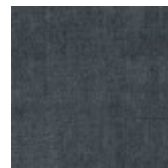
F20  
Tempesta di  
sabbia



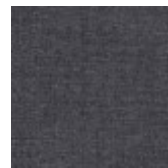
F25 Solstizio



F26  
Tramonto



F24 Acque  
tropicali



F23 Nube



F27 Foresta



F22 Tornado

## ORSETTO



H1B Perla



H1G  
Conchiglia



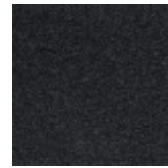
H1H  
Alabastro



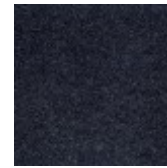
H1C Opale



H1F Ematite



H1A Onice  
nero



H1D Zaffiro



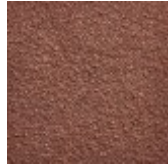
H1E Giada



H1J Agata



H1L Topazio



H1K Ambra

## EMBOSSSED ECO-LEATHERS A291 / A844



CL1 Sabbia



CL8 Sepia

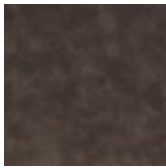


CL6 Nero

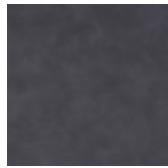
## EMBOSSSED ECO-LEATHERS REBEL



CM3 Argilla



CM5  
Tabacco



CM7 Grigio  
scuro

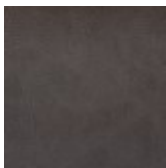


CM9 Grigio  
chiaro

## EMBOSSSED ECO-LEATHERS VINTAGE



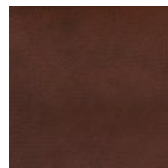
CM6 Creta



CM4  
Cappuccino

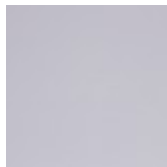


CM8 Coffee



CM2  
Mattone

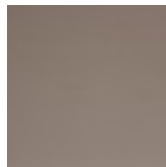
## SMOOTH ECO-LEATHERS BLOOM



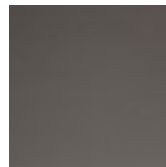
CF7 Nuvola



CD3 Beige



CF8  
Nocciola



CF6 Argilla



CD1 Testa di  
Moro

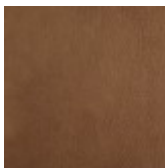


CF9 Caffè

## SMOOTH ECO-LEATHERS OLD



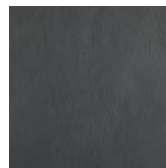
CD6 Bianco



CD9 Cuoio  
naturale



CD8  
Mattone

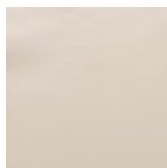


CD7 Grigio  
scuro

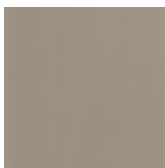


CD0 Nero

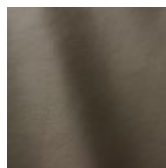
## SMOOTH LEATHERS



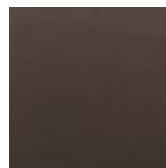
H38 Sabbia



H36  
Camoscio



H3F Muschio



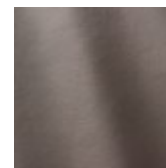
H71 Testa di  
Moro



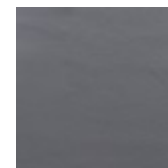
H3E Grigio  
Caldo



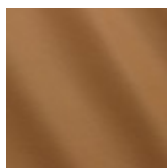
H35 Grigio  
Chiaro



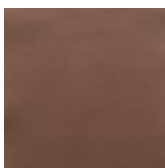
H08 Asfalto



H26  
Antracite



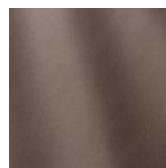
H3B Cuoio



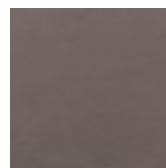
H31  
Naturale



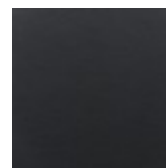
H3A  
Terracotta



H34 Fango

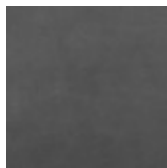


H32 Taupè

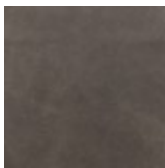


H73 Nero

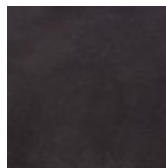
## BRUSHED LEATHER



HN3 Leone

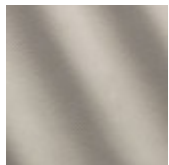


HN2  
Rinoceronte

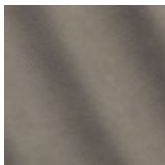


HN1 Orso  
bruno

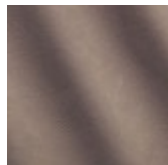
# NABUK



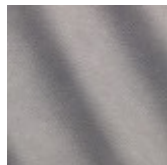
N08 Orso  
polare



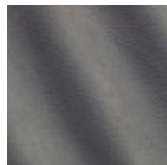
N05  
Rinoceronte



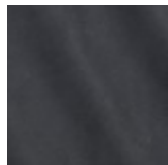
N14  
Antilope



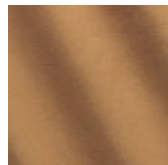
N11 Lupo



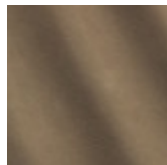
N12 Balena



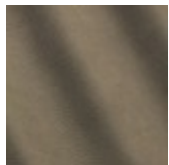
N09 Squalo  
blu



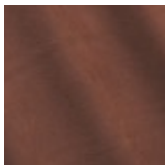
N10 Tigre



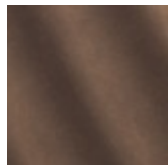
N07 Leone



N04  
Alligatore



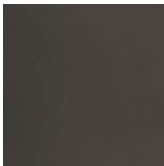
N06 Volpe



N13 Orso  
bruno

# FEET FINISHINGS

## MATT METALS



524  
Varnished  
Gun metal

# BOOKCASE FINISHINGS

## MATT LACQUERED



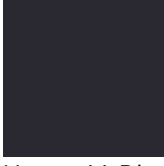
01 Gesso    8B Caolino    9G Ostrica    6B Grigio Pietra    14 Nero    02 Talco    9F Sand    4G Argilla



8C Cappuccino    5B Grigio Lava    72 Sabbia    8A Beige    9T Toffee    93 Melange    13 Sepia    09 Wengè



New - 12 Vinaccia    New - 68 Melanzana    94 Marsala    95 Ruggine    9B Senape    98 Oliva    New - 8Z Bosco    9H Petrolio



New - 41 Blu notte

## HIGH GLOSS LACQUERED



L01 Gesso    L8B Caolino    L9G Ostrica    L6B Grigio Pietra    L14 Nero    L02 Talco    L9F Sand    L4G Argilla



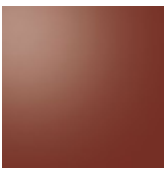
L8C Cappuccino    L5B Grigio Lava    L72 Sabbia    L8A Beige    L9T Toffee    L93 Melange    L13 Sepia    L09 Wengè



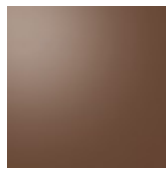
New - L12  
Vinaccia



New - L68  
Melanzana



L94 Marsala



L95 Ruggine



L9B Senape



L98 Oliva



New - L8Z  
Bosco



L9H Petrolio



New - L41  
Blu notte

## MATT VENEERS



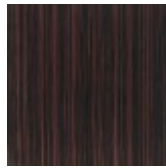
53 Elm grey



51 Black oak



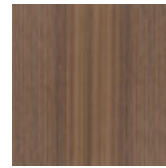
66 Tobacco



62 Ebony



54  
Eucalyptus

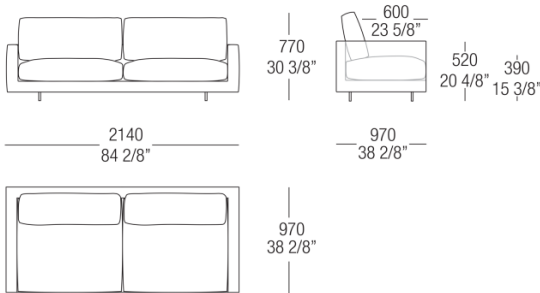


67 Noce  
Canaletto

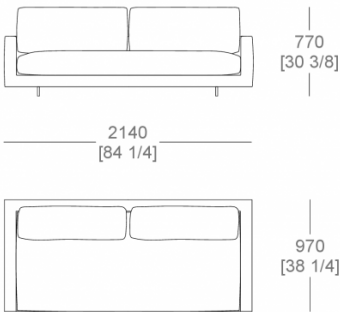


# DIMENSIONS

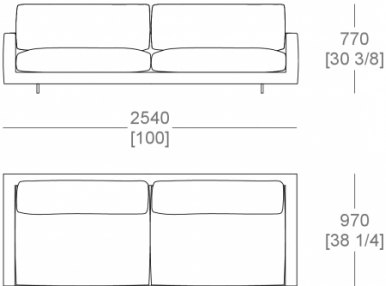
Sofa W. 2140 mm split sitting cushion - armrest W. 100 mm



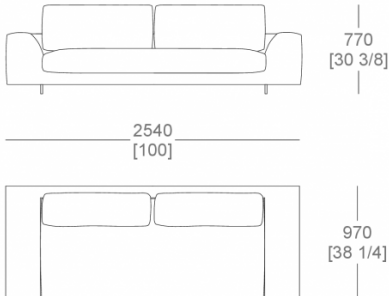
Sofa W. 2140 mm full sitting cushion - armrest W. 100 mm



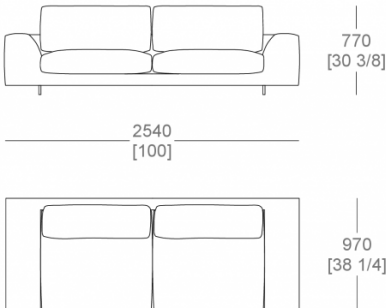
Sofa W. 2540 mm split sitting cushion - armrest W. 100 mm



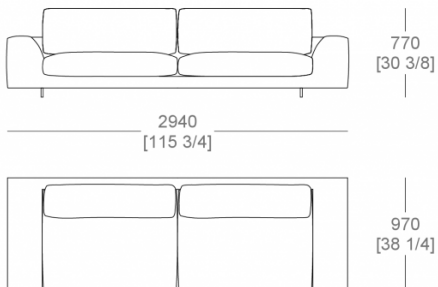
Sofa W. 2540 mm full sitting cushion - armrest W. 300 mm



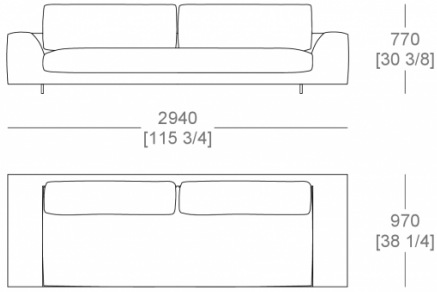
Sofa W. 2540 mm split sitting cushion - armrest W. 300 mm



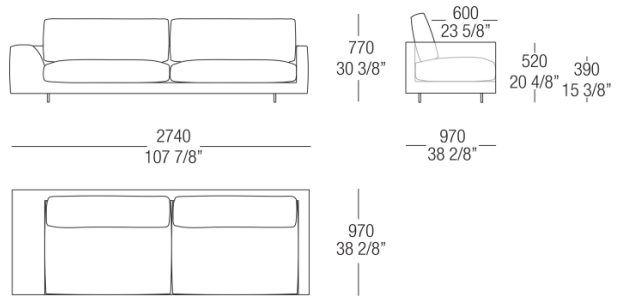
Sofa W. 2940 mm split sitting cushion - armrest W. 300 mm



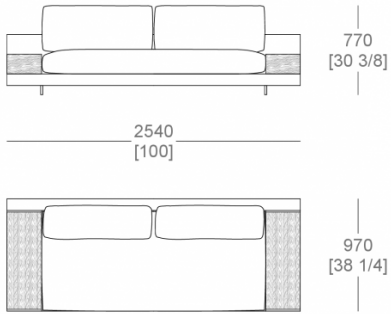
Sofa W. 2940 mm full sitting cushion - armrest W. 300 mm



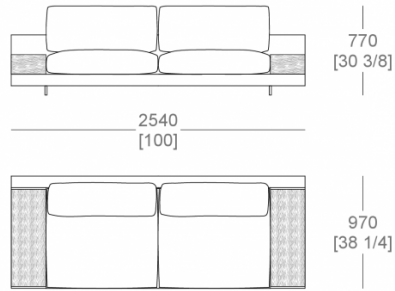
Sofa W. 2740 mm



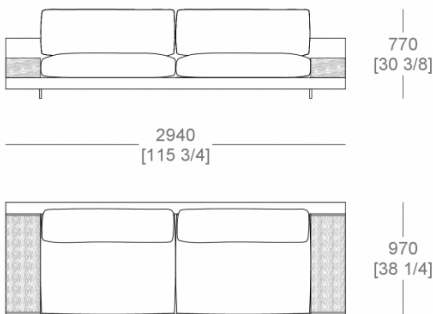
Sofa W. 2540 mm, top support W. 300 x D. 840 mm - full sitting cushion



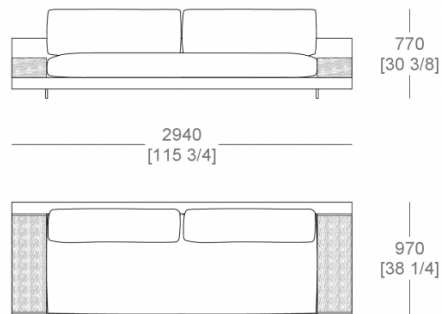
Sofa W. 2540 mm, top support W. 300 x D. 840 mm - split sitting cushion



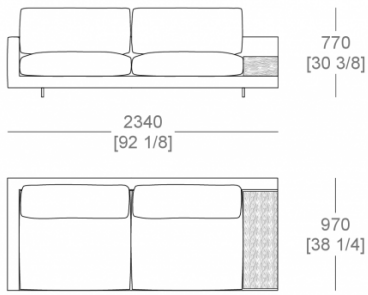
Sofa W. 2940 mm, top support W. 300 x D. 840 mm - split sitting cushion



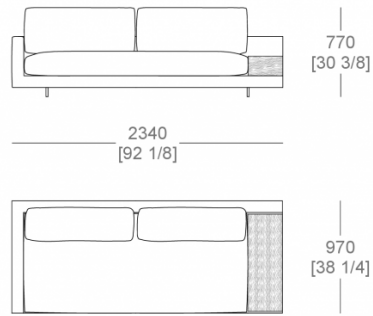
Sofa W. 2940 mm, top support W. 300 x D. 840 mm - full sitting cushion



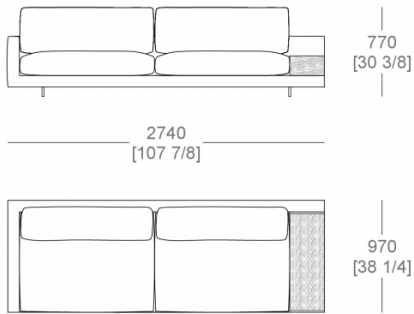
Sofa W. 2340 mm - top support W. 300 x P. 940 mm, full sitting cushion, SX-DX



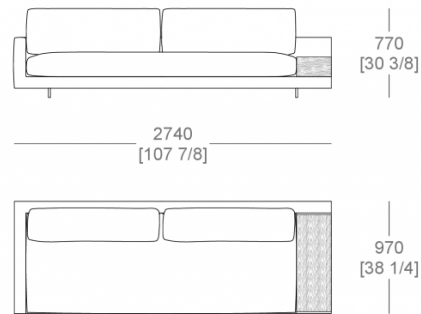
Sofa W. 2340 mm - top support W. 300 x P. 940 mm, full sitting cushion, SX-DX



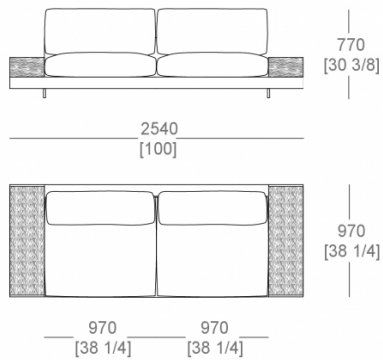
Sofa W. 2740 mm - armrest W. 100 mm, top support W. 300 x D. 840 mm, split sitting cushion



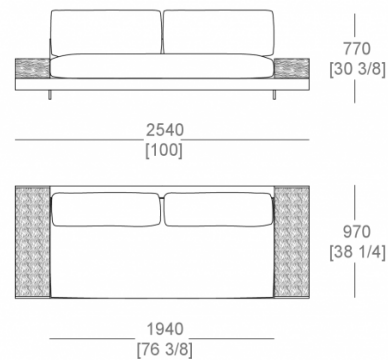
Sofa W. 2740 mm - armrest W. 100 mm, top support W. 300 x D. 840 mm, full sitting cushion



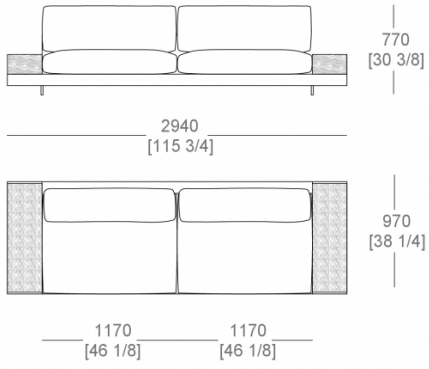
Sofa W. 2540, top support W. 300 x D. 940 mm, split sitting cushion



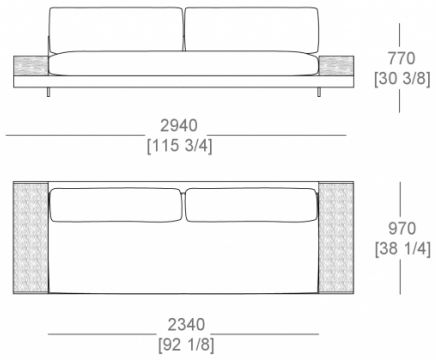
Sofa W. 2540, top support W. 300 x D. 940 mm, full sitting cushion



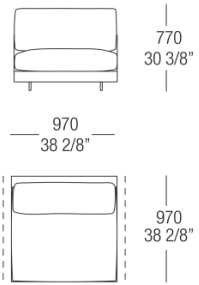
Sofa W. 2940, top support W. 300 x D. 940 mm, split sitting cushion



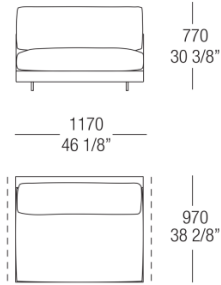
Sofa W. 2940, top support W. 300 x D. 940 mm, full sitting cushion



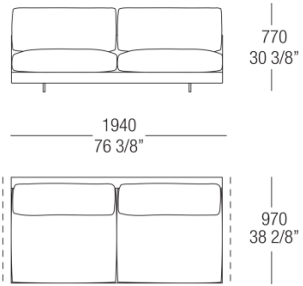
Central element W. 970 mm



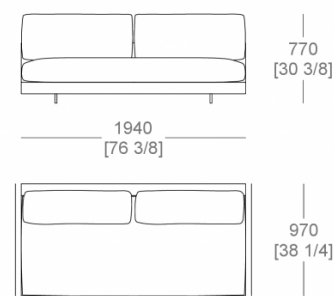
Central element W. 1170 mm



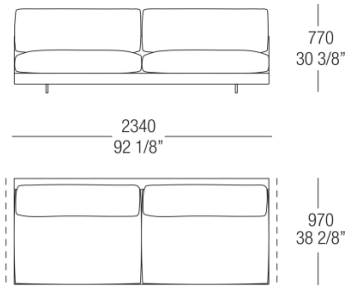
Central element W. 1940 mm, split sitting cushion



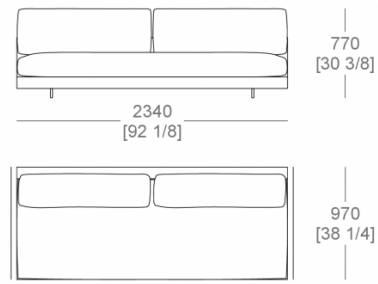
Central element W. 1940 mm, full sitting cushion



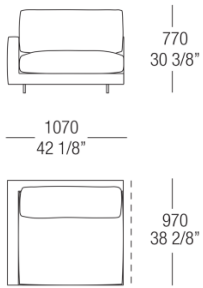
Central element W. 2340 mm, split sitting cushion



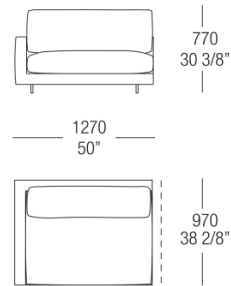
Central element W. 2340 mm, full sitting cushion



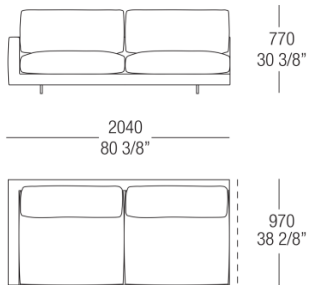
Terminal element W. 1070 mm - armrest W. 100, SX-DX



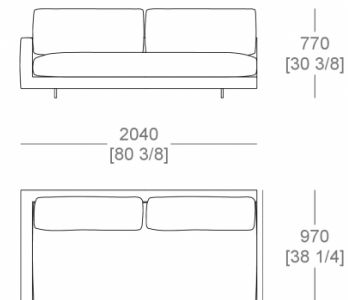
Terminal element W. 1270 mm



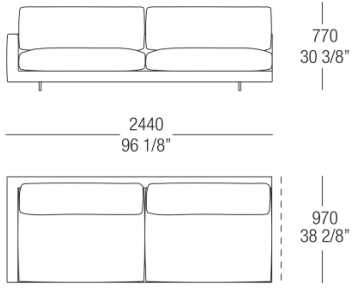
Terminal element W. 2040 mm - armrest W. 100, split sitting cushion SX-DX



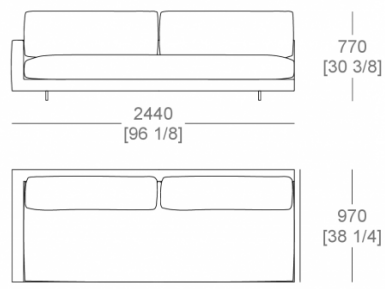
Terminal element W. 2040 - armrest W. 100 mm, full sitting cushion, SX-DX



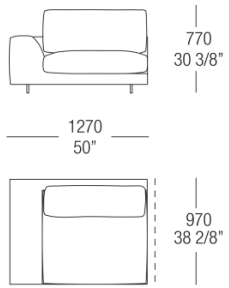
Terminal element W. 2240 mm - armrest W. 100 mm, split sitting cushion, SX-DX



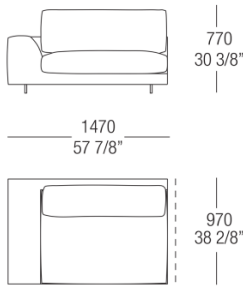
Terminal element W. 2440 mm - armrest W. 100 mm, full sitting cushion, SX-DX



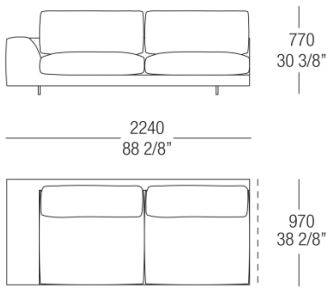
Terminal element W. 1270 mm - armrest W. 300, SX-DX



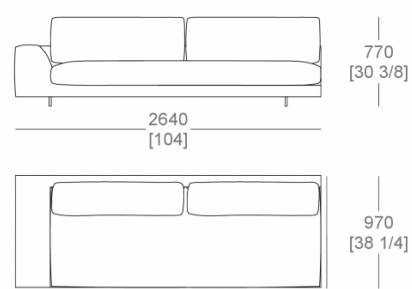
Terminal element W. 1470 mm - armrest W. 100, SX-DX



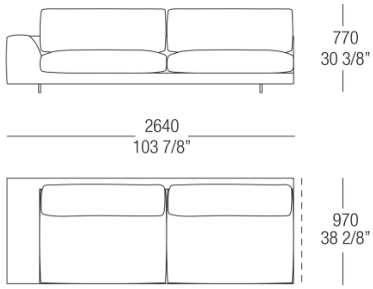
Terminal element W. 2240 mm - armrest W. 300 mm, split sitting cushion, SX-DX



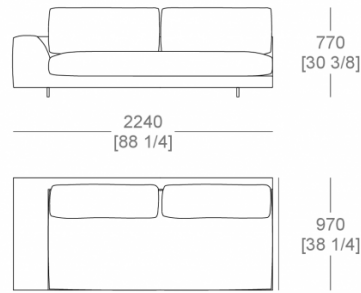
Terminal element W. 2640 mm - armrest W. 300 mm, full sitting cushion, SX-DX



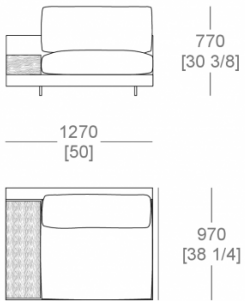
Terminal element W. 2640 mm - armrest W. 300, split sitting cushion SX-DX



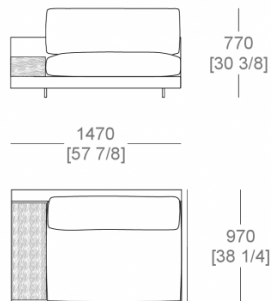
Terminal element W. 2240 mm - armrest W. 300 mm, full sitting cushion, SX-DX



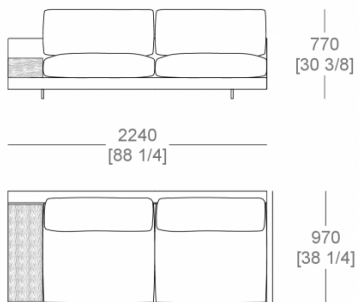
Terminal element W. 1270 mm - top support W. 300 x D. 840 mm, SX-DX



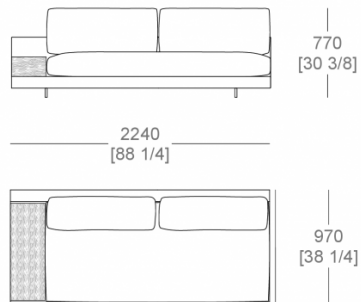
Terminal element W. 1470 mm - top support W. 300 x D. 840 mm, SX-DX



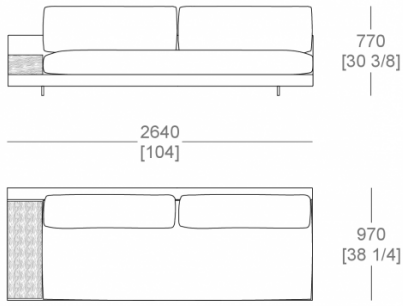
Terminal element W. 2240 mm - top support W. 300 x D. 840 mm, split sitting cushion, SX-DX



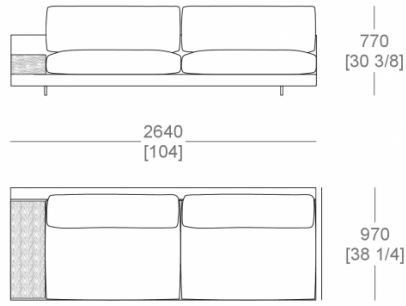
Terminal corner element W. 2240 mm - top support W. 300 x P. 840 mm, full sitting cushion, SX-DX



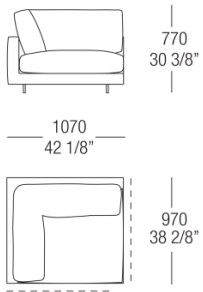
Terminal corner element W. 2340 mm - top support W. 300 x P. 840 mm, split sitting cushion, SX-DX



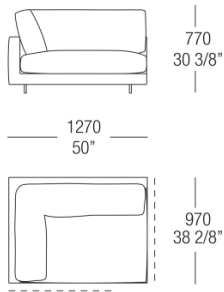
Terminal element W. 2640 mm - top support W. 300 x D. 840 mm, split sitting cushion, SX-DX



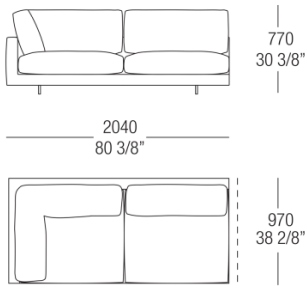
Corner element W. 1070 mm, SX-DX



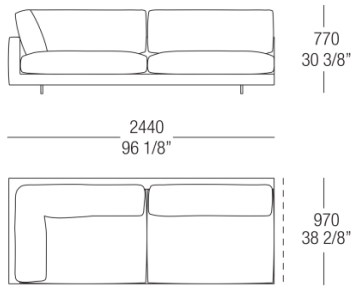
Corner element W. 1270 mm, SX-DX



Corner element W. 2040 mm, split sitting cushion SX-DX

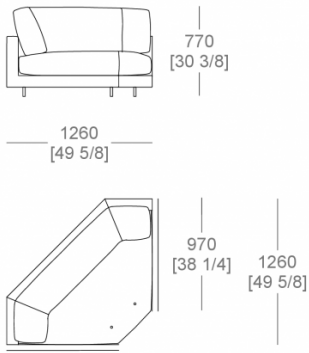


Corner element W. 2440 mm, split sitting cushion SX-DX

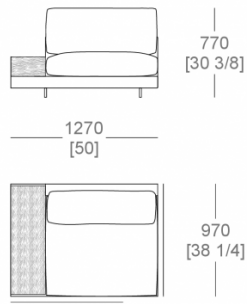




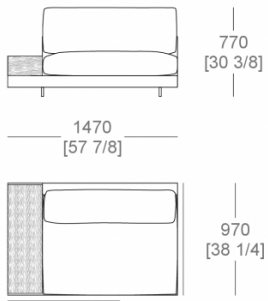
Corner element 45° W. 1260 x D. 1200 mm



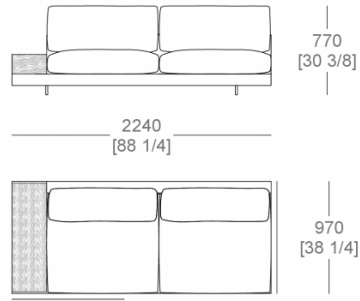
Corner element W. 1270 mm - top support W. 300 x D. 840 mm. SX-DX



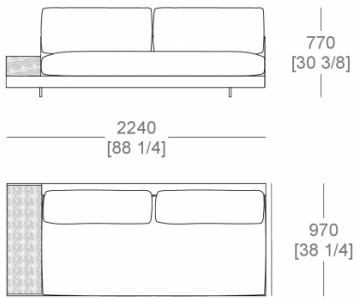
Corner element W. 1470 mm - top support W. 300 x D. 840 mm. SX-DX



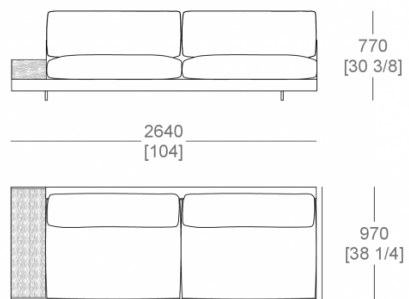
Corner element W. 2240 mm - top support W. 300 x D. 840 mm, split sitting cushion SX-DX



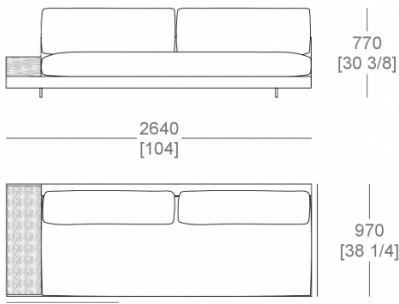
Corner element W. 2240 mm - top support W. 300 x D. 840 mm, full sitting cushion SX-DX



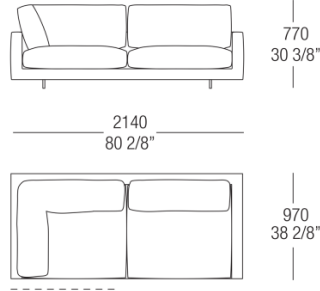
Corner element W. 2640 mm - top support W. 300 x D. 840 mm, split sitting cushion SX-DX



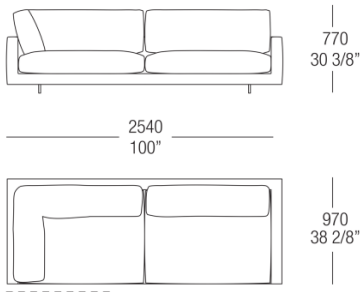
Corner element W. 2640 mm - top support W. 300  
D. 840 mm, full sitting cushion SX-DX



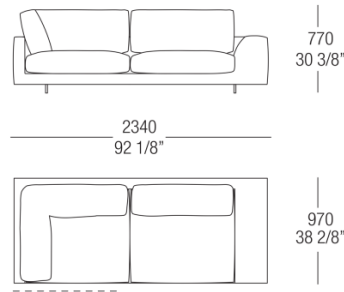
Terminal corner element W. 2140 mm \_ split sitting  
cushion, SX-DX



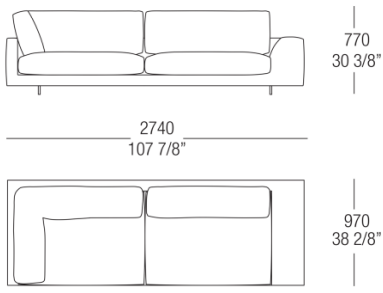
Terminal corner element W. 2540 mm - split sitting  
cushion, SX-DX



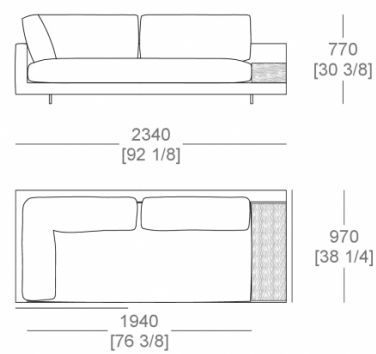
Terminal corner element W. 2340 mm -armrest L.  
300 mm, split sitting cushion, SX-DX



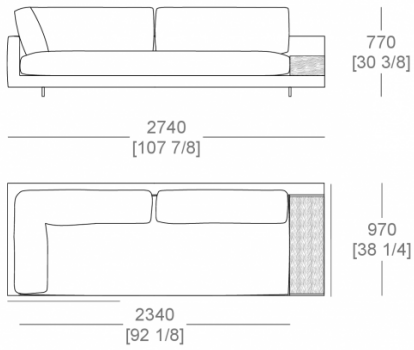
Terminal corner element W. 2740 mm -armrest L.  
300 mm, split sitting cushion, SX-DX



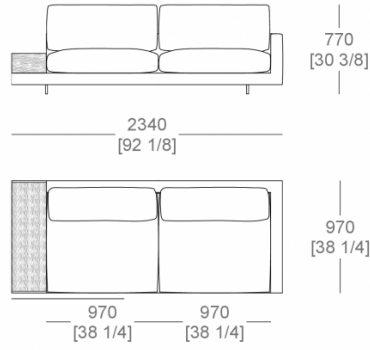
Terminal corner element W. 2340 mm - top support  
W. 300 x D. 840 mm, full sitting cushion, SX-DX



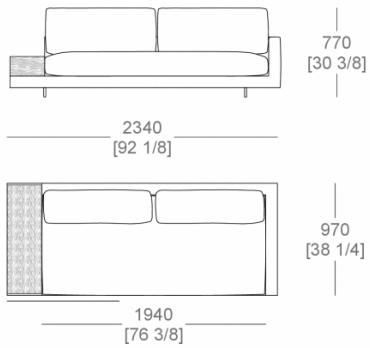
Terminal corner element W. 2740 mm - top support  
W. 300 x D. 840 mm, full sitting cushion, SX-DX



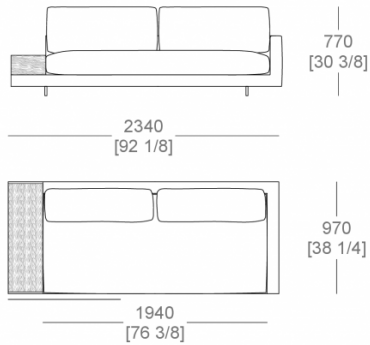
Terminal corner element W. 2340 mm - top support  
W. 300 x P. 940 mm, split sitting cushion, SX-DX



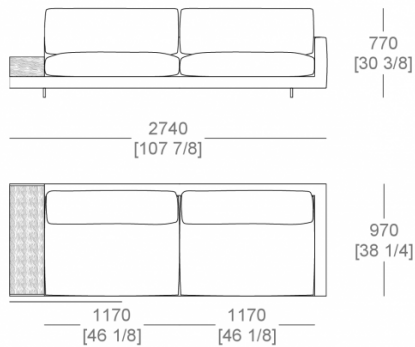
Terminal corner element W. 2340 mm - top support  
W. 300 x P. 940 mm, full sitting cushion, SX-DX



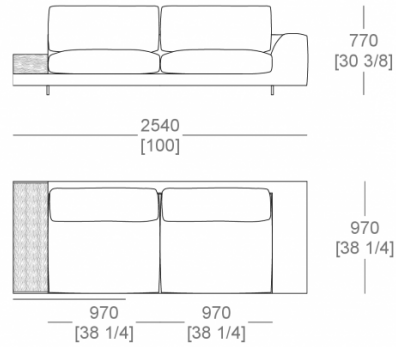
Terminal corner element W. 2740 mm - top support  
W. 300 x P. 940 mm- armrest W. 300 mm, full sitting  
cushion, SX-DX



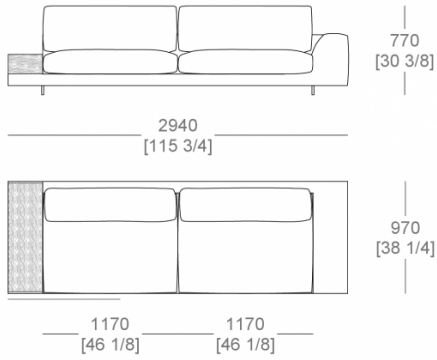
Terminal corner element W. 2740 mm - top support  
W. 300 x P. 940 mm- armrest W. 300 mm, split  
sitting cushion, SX-DX



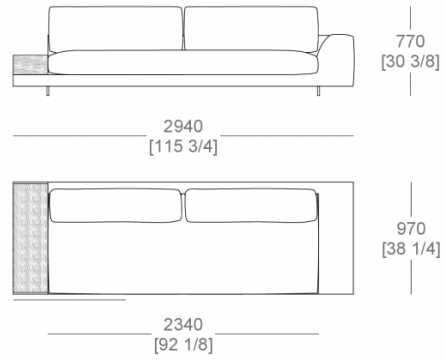
Terminal corner element W. 2540 mm - top support  
W. 300 x P. 940 mm- armrest W. 300 mm, full sitting  
cushion, SX-DX



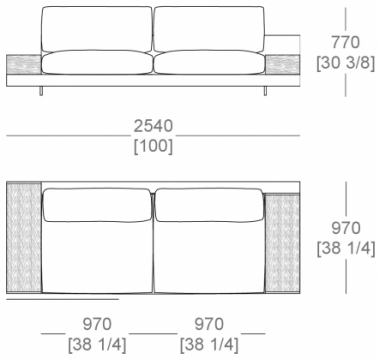
Terminal corner element W. 2940 mm - top support W. 300 x P. 940 mm- armrest W. 300 mm, split sitting cushion, SX-DX



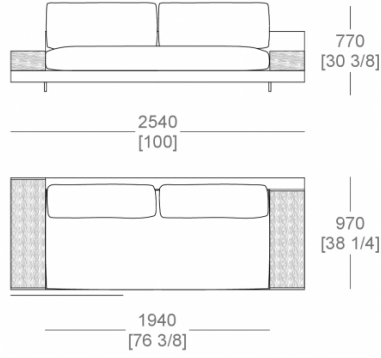
Terminal corner element W. 2940 mm - top support W. 300 x P. 940 mm- armrest W. 300 mm, full sitting cushion, SX-DX



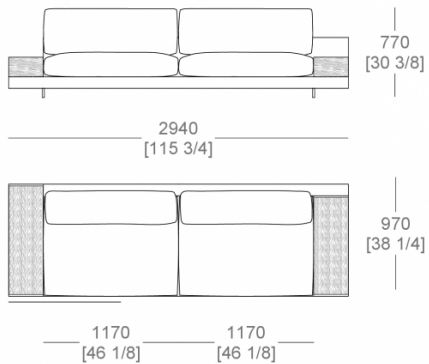
Terminal corner element W. 2540 mm - top support W. 300 x D. 940 mm, top support W. 300 x D. 840, full sitting cushion, SX-DX



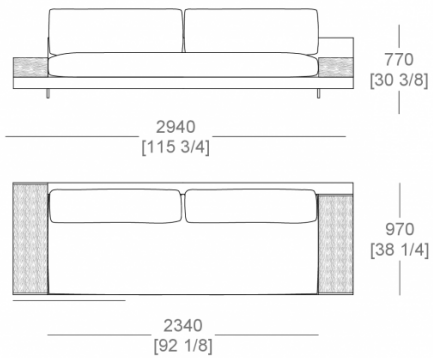
Terminal corner element W. 2540 mm - top support W. 300 x D. 940 mm, top support W. 300 x D. 840, full sitting cushion, SX-DX



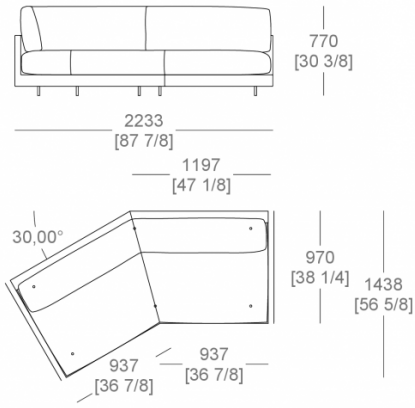
Terminal corner element W. 2940 mm - top support W. 300 x D. 940 mm, top support W. 300 x D. 840, split sitting cushion, SX-DX



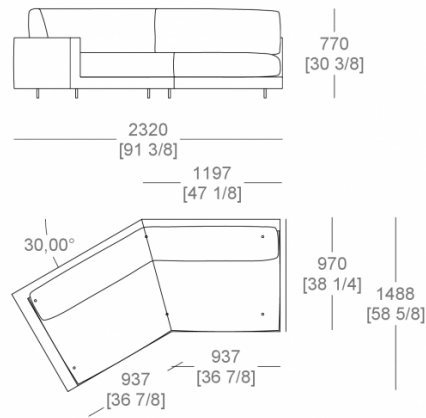
Terminal corner element W. 2940 mm - top support W. 300 x D. 940 mm, top support W. 300 x D. 840, full sitting cushion, SX-DX



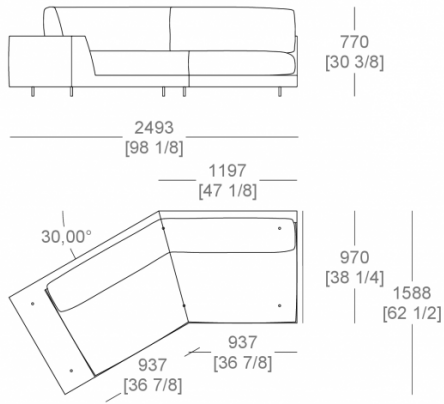
Central element slanted 30° W. 2233 x D. 1438 mm,  
full sitting cushion



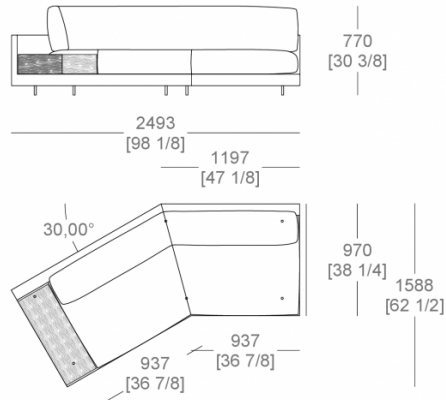
Central element slanted 30° W. 2320 x D. 1488 mm  
- armrest L. 100 mm, full sitting cushion



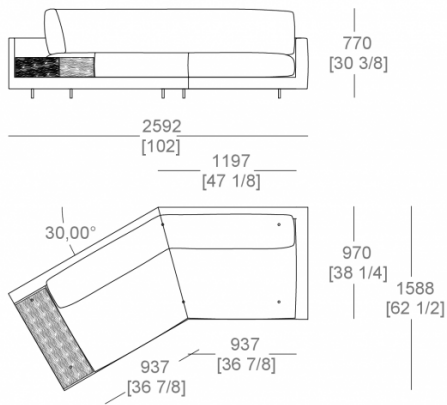
Central element slanted 30° W. 2493 x D. 1588 mm  
- armrest L. 300 mm, full sitting cushion



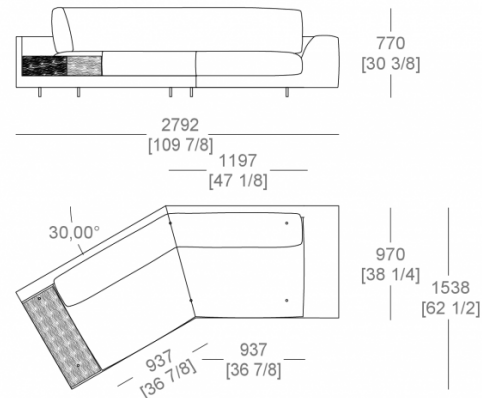
Central element slanted 30° W. 2493 x D. 1588 mm  
- top support W. 300 X D. 840 mm, full sitting  
cushion, SX-DX



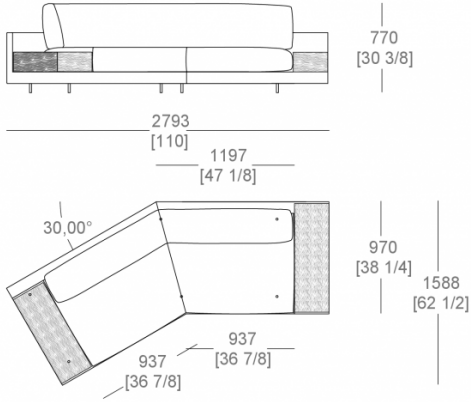
Terminal element slanted 30° W. 2592 mm - top  
support W. 300 x D. 840 mm, armrest W. 100 mm,  
full sitting cushion



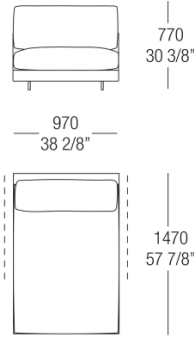
Terminal element slanted 30° W. 2792 mm - top  
support W. 300 x D. 840mm, armrest W. 300mm,  
full sitting cushion



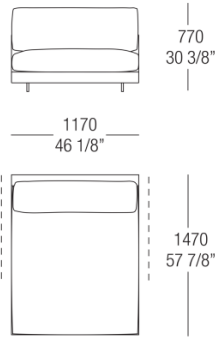
Terminal element slanted 30° W. 2793 mm - top support W. 300 x D. 840/940 mm, full sitting cushion



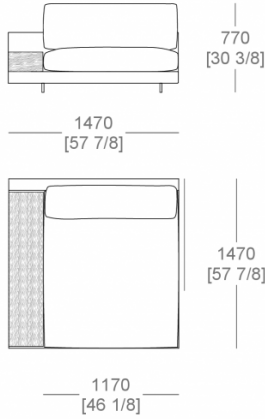
Chaise longue W. 970 mm



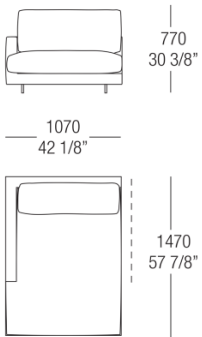
Chaise longue W. 1170 mm



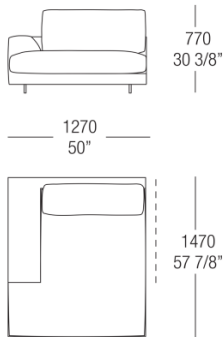
Chaise Longue W. 1470 mm - top support W. 300 x D. 1340 mm, SX-DX



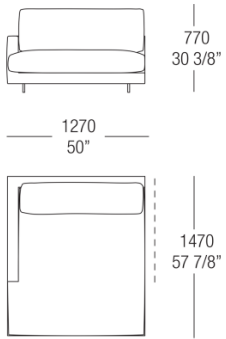
Chaise longue W. 1070 mm - armrest W. 100 mm, SX-DX



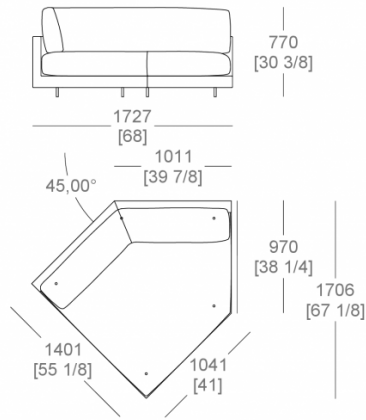
Chaise longue L. 1270 mm - armrest W. 300 mm, SX-DX



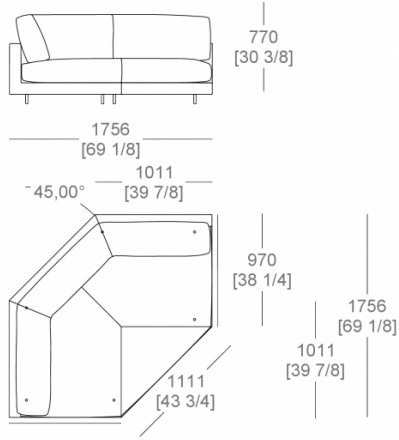
Chaise longue W. 1270 mm - armrest W. 100 mm, SX-DX



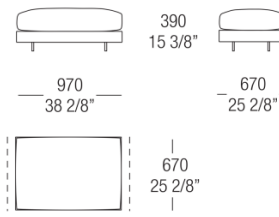
Chaise longue slanted 45° W. 1727 x D. 1706 mm, full sitting cushion, Sx-DX



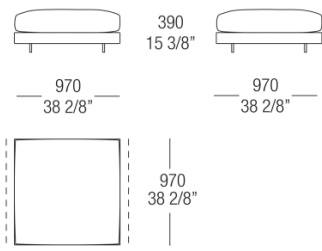
Chaise longue slanted 45° W. 1756 x D. 1706 mm, full sitting cushion, SX-DX



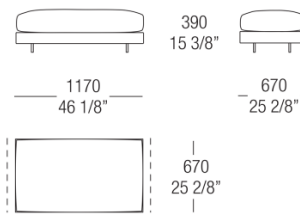
Pouf W. 970 mm



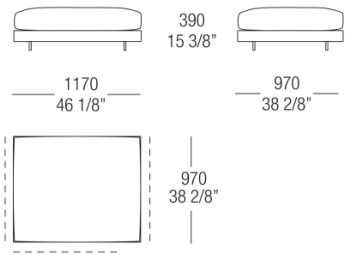
Pouf W. 970 mm



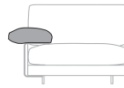
Pouf W. 1170 mm



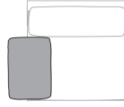
### Pouf W. 1170 mm



### Cushion optional



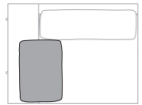
mm L 400 P 600 H 450  
inch W 15 6/8" D 23 5/8" H 17 6/8"



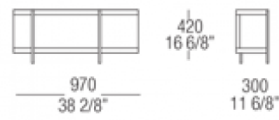
### Cushion optional



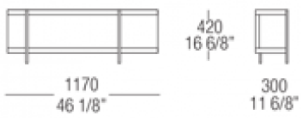
mm L 400 P 600 H 90  
inch W 15 6/8" D 23 5/8" H 3 4/8"



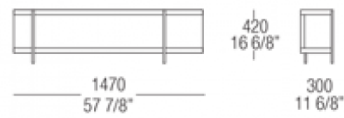
### Bookcase element W. 970 mm



### Bookcase element W. 1170 mm

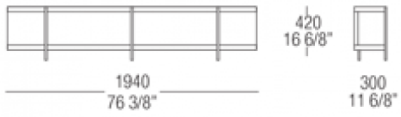


### Bookcase element W. 1470 mm

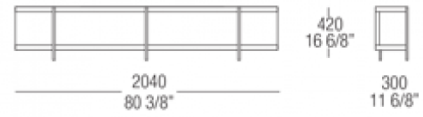




Bookcase element W. 1940 mm



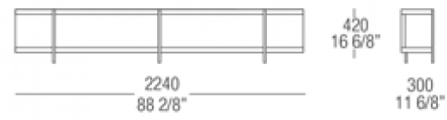
Bookcase element W. 2040 mm



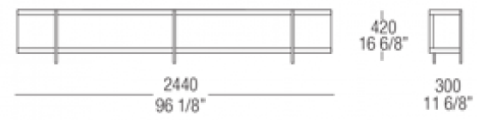
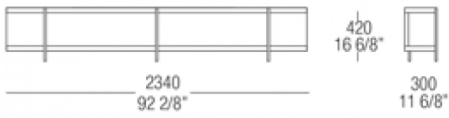
Bookcase element W. 2140 mm



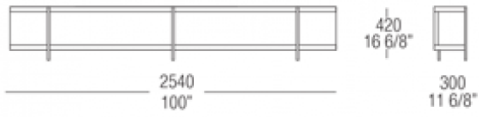
Bookcase element W. 2240 mm



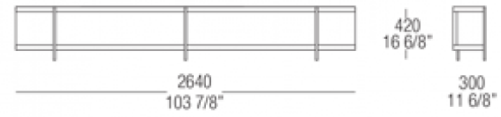
Bookcase element W. 2440 mm



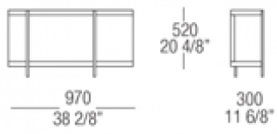
Bookcase element W. 2540 mm



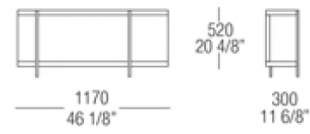
Bookcase element W. 2640 mm



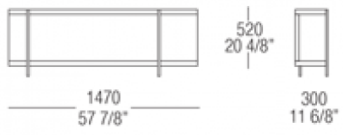
Bookcase element W. 970 mm



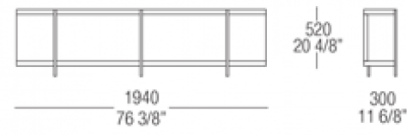
Bookcase element W. 1170 mm



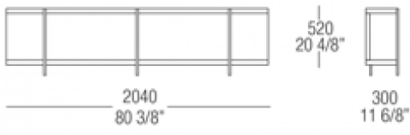
Bookcase element W. 1470 mm



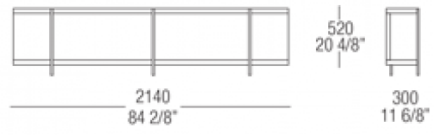
Bookcase element W. 1940 mm



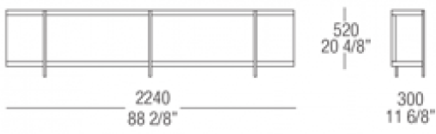
Bookcase element W. 2040 mm



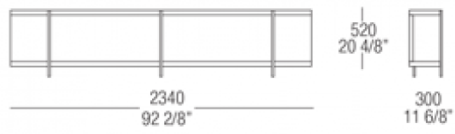
Bookcase element W. 2140 mm



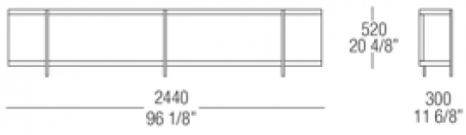
Bookcase element W. 2240 mm



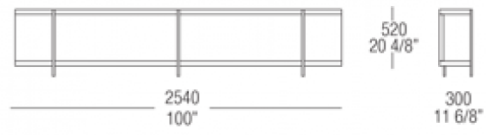
Bookcase element W. 2340 mm



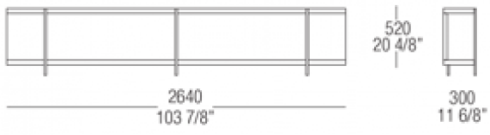
Bookcase element W. 2440 mm



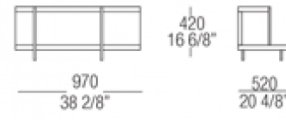
Bookcase element W. 2540 mm



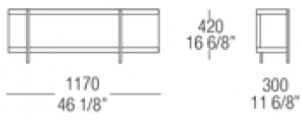
Bookcase element W. 2640 mm



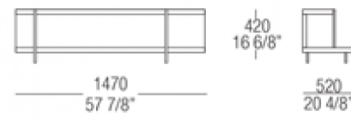
Bookcase element W. 970 mm



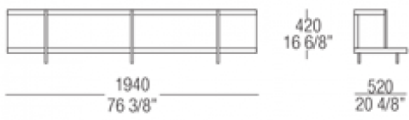
Bookcase element W. 1170 mm



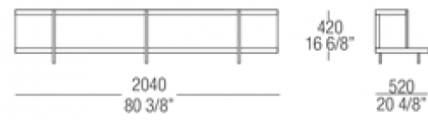
Bookcase element W. 1470 mm



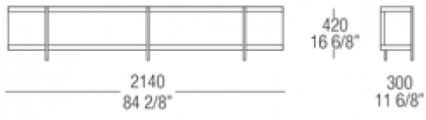
Bookcase element W. 1940 mm



Bookcase element W. 2040 mm



Bookcase element W. 2140 mm



Bookcase element W. 2240 mm



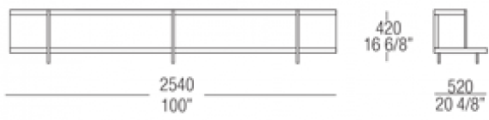
Bookcase element W. 2340 mm



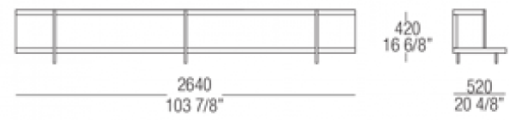
Bookcase element W. 2440 mm



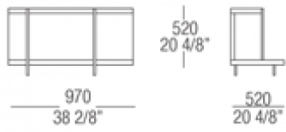
Bookcase element W. 2540 mm



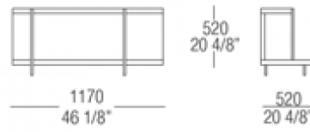
Bookcase element W. 2640 mm



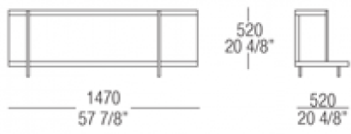
Bookcase element W. 970 mm



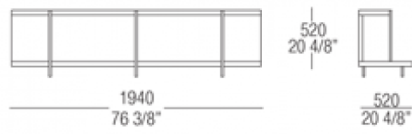
Bookcase element W. 1170 mm



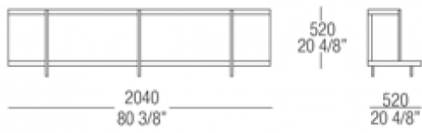
Bookcase element W. 1470 mm



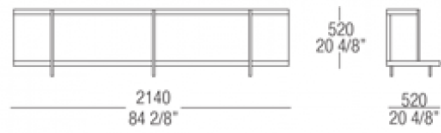
Bookcase element W. 1940 mm



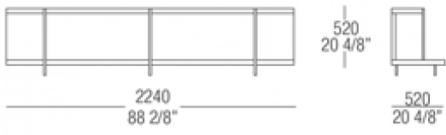
Bookcase element W. 2040 mm



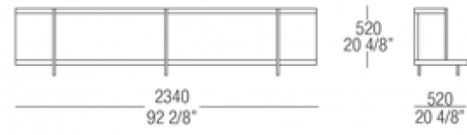
Bookcase element W. 2140 mm



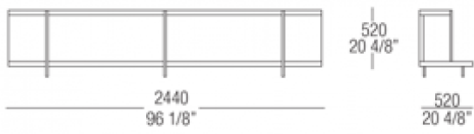
Bookcase element W. 2240 mm



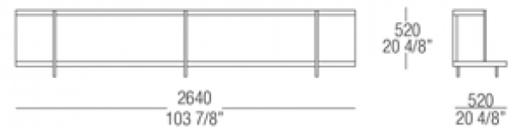
Bookcase element W. 2340 mm



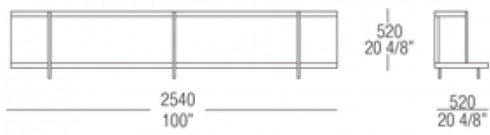
Bookcase element W. 2440 mm



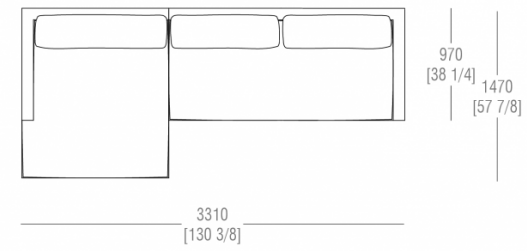
Bookcase element W. 2640 mm



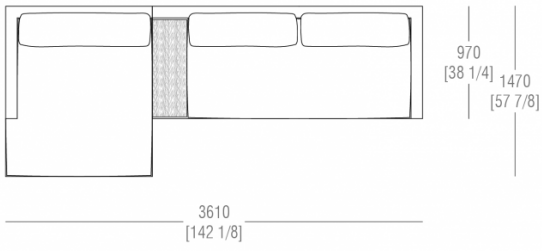
Bookcase element W. 2540 mm



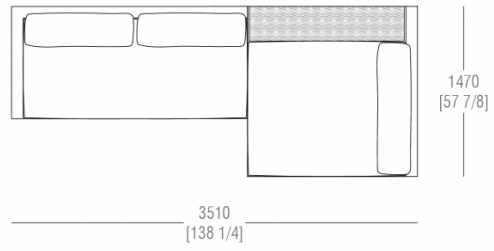
Composition W. 3310 x D. 1470 mm



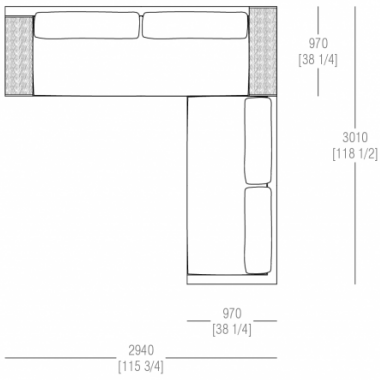
Composition W. 3610 x D. 1470 mm



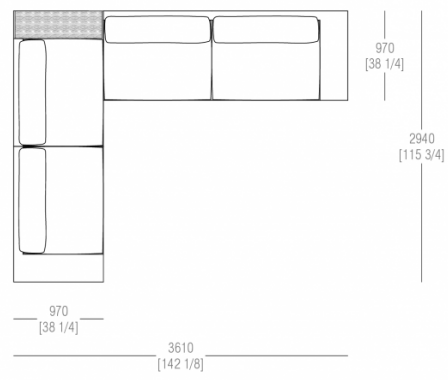
Composition W. 3510 x D. 1470 mm



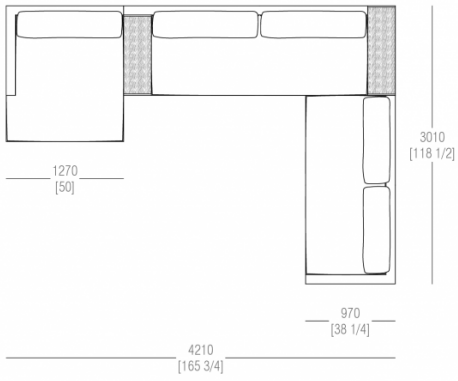
Composition W. 2940 x D. 3010 mm



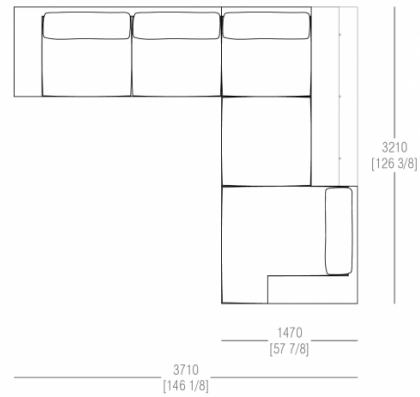
Composition W. 3610 x D. 2940 mm



Composition W. 4210 x D. 3010 mm

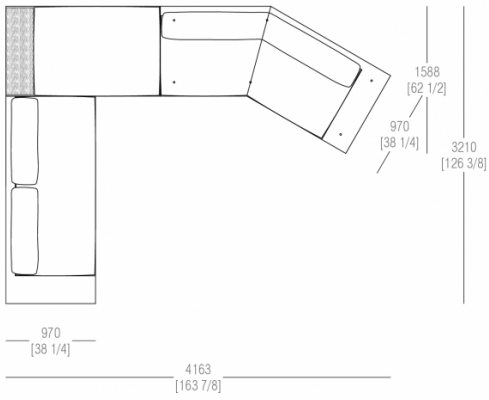


Composition W. 3710 x D. 3210 mm

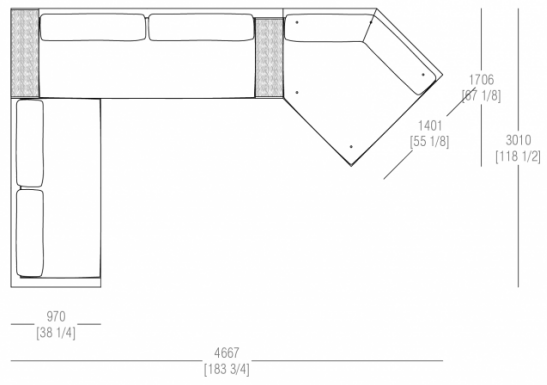




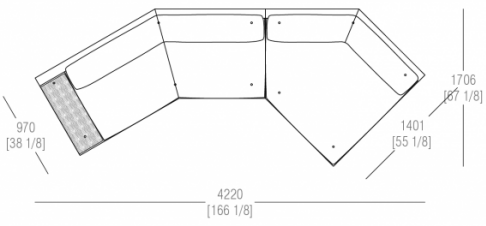
Composition W. 4163 x D. 3210 mm



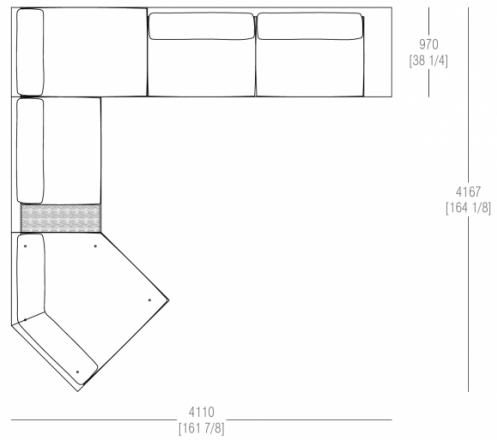
Composition W. 4667 x D. 3010 mm



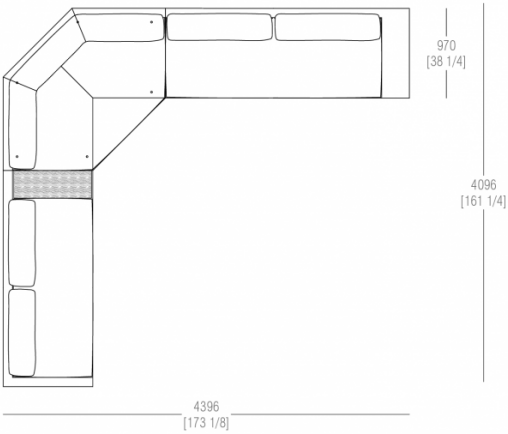
Composition W. 4220 x D. 1706



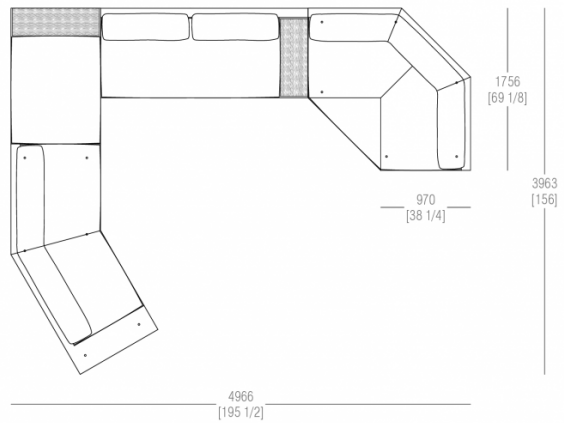
Composition W. 4110 x D. 4167 mm



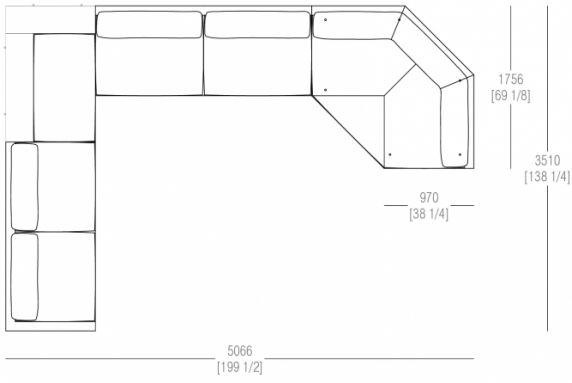
Composition W. 4396 x D. 4096 mm



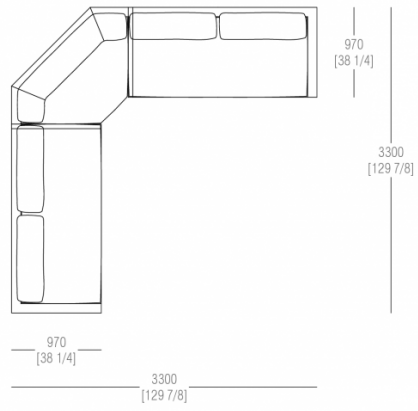
Composition W. 4966 x D. 3963 mm



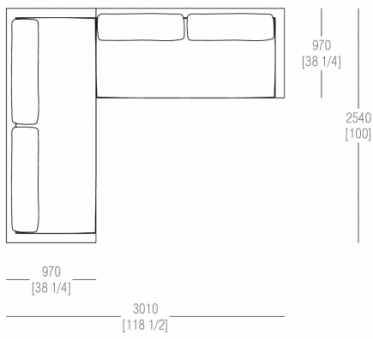
Composition W. 5066 x D. 3510 mm



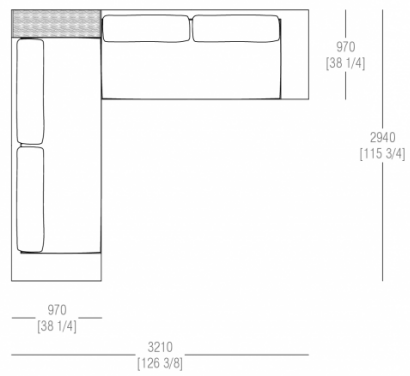
Composition W. 3300 x D. 3300 mm



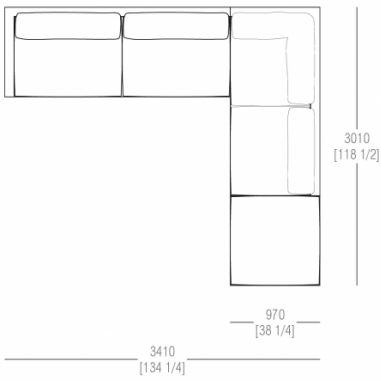
Composition W. 3010 x D. 2540 mm



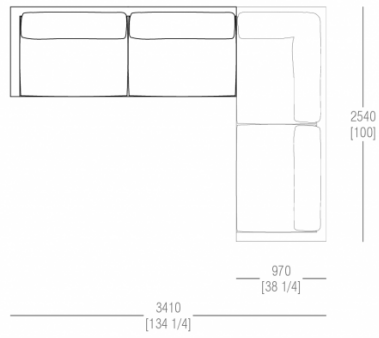
Composition W. 3210 x D. 2940 mm



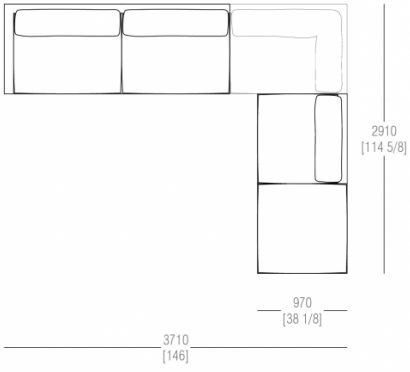
Composition W. 3410 x P. 3010 mm



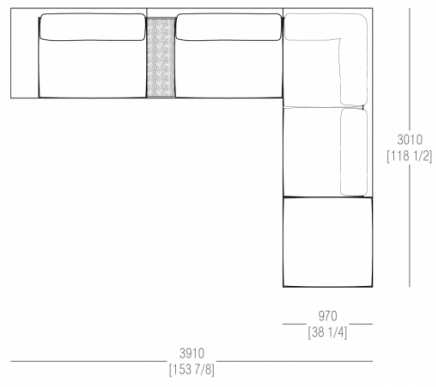
Composition W. 3410 x D. 2540 mm



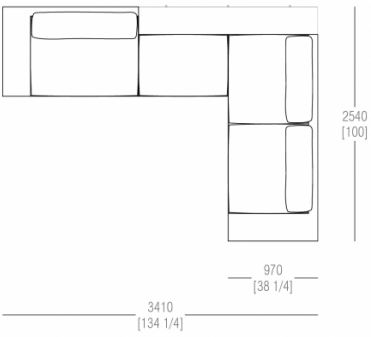
Composition W. 3710 x P. 2910 mm



Composition W. 3910 x D. 3010 mm



Composition W. 3410 x D. 2540 mm



**MisuraEmme®**